

# Business Process Management Server

High-value, business process automation solution focused on accelerated, code-free implementation

## OVERVIEW

Adeptia BPM Server (BPMS) is a comprehensive solution that combines process management with application and partner integration. It allows business users and IT staff to collaborate so as to automate and optimize complex business processes.

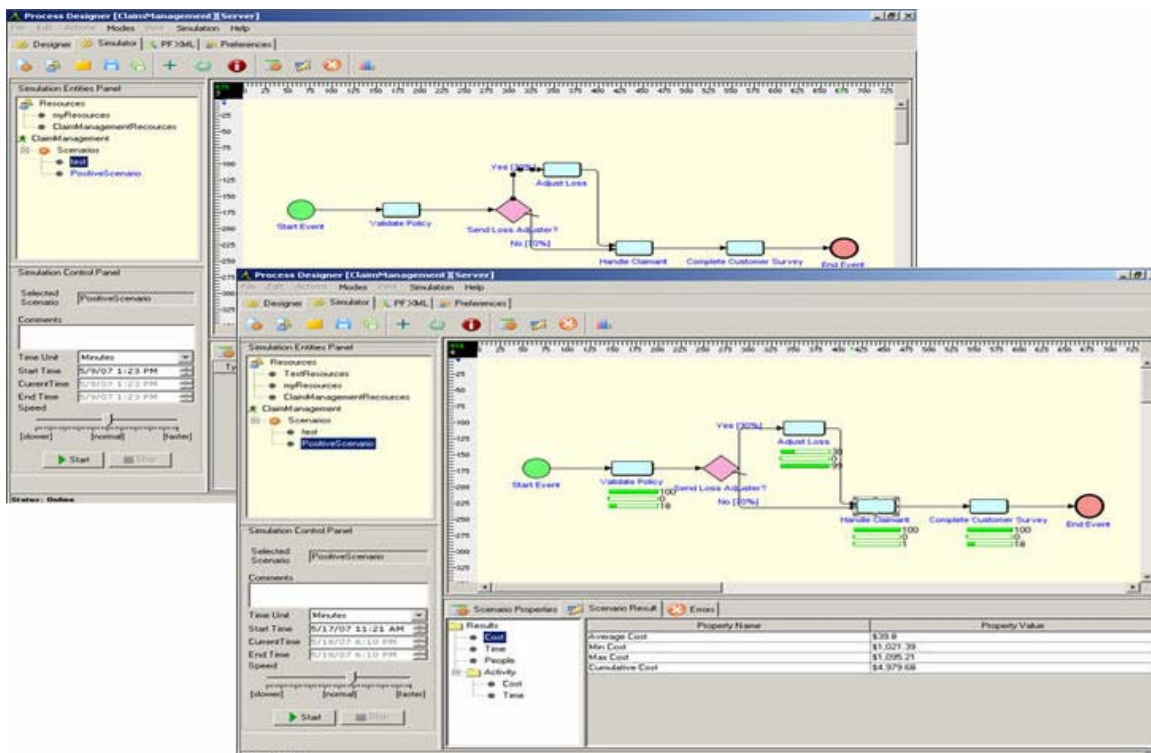
BPM Server offers a powerful business tool for managers to document, control and monitor critical processes and then improve them. It also offers IT staff an easy and simple way to deliver highly complex process management for changing business needs. This enterprise-class software allows companies to leverage the Internet by deploying extended enterprise processes that link partners, suppliers and customers.

## BENEFITS

- Document and formalize business processes, tasks and rules
- Enforce business decisions by specifying them in processes
- Ensure processes are constant and repetitive, not ad-hoc
- Track tasks, monitor performance, and optimize performance
- Shorten process lifecycles and seamlessly manage exceptions
- Accelerate return on investment by realizing significant cost savings on integration projects
- Leverage technology investments by extending functionality of existing systems
- Generate new revenue opportunities by bringing products and services to market faster than competitors
- Enhance customer relationships by making it easier to do business with your organization

## KEY FEATURES

- Business managers can document, model and simulate process flows and hand them-off to IT for automation
- Business users can utilize workflow capabilities to interact with processes, view business information and make decisions all via a web-browser
- Web-based, intuitive interface allows for increased productivity with minimal training. Offers an integrated composition environment.
- Comprehensive web services capabilities
- Full-featured integration functionality for the enterprise includes message transport, data transformation and transaction scheduling
- Aggregate and distribute content to and from multiple source and destination systems
- Object-based architecture promotes reusable components and functionality across disparate custom, packaged and legacy applications
- Complete management, reporting and auditing capabilities to track and monitor transactions
- Fully standards-based solution, using XML and J2EE



## PROCESS DESIGNER

BPM Server (BPMS) offers a graphical process design and modeling interface. Business analysts utilize this simple to use, drag and drop interface for quickly designing process and data flows and to document business rules. Then developers directly implement these processes for execution by creating and populating each service task in the process flow. Process Designer utilizes BPMN standards based notation for flows.

## PROCESS SIMULATION

Process optimization is an important part of a complete process lifecycle. Powerful process simulation capabilities are offered to do both cost-based and timing-based analysis of the "as-is" and "to-be" processes. Reports are included that help compare scenarios and identify bottlenecks.

## PROCESS ENGINE

BPMS includes a powerful, full-featured engine for automated process execution. Its support for decision nodes, sub processes, exception handling, forks and joins, loops and long running transactions allows execution of process flows of almost any complexity. It also supports failure recovery as well as a job queue and clustering for reliability and high performance. Both real-time and batch events are available to trigger flows.

## WEB SERVICES

Comprehensive support for Web Services includes ability to utilize any Web Service as a task in a process flow. This includes support for introspection of UDDI/WSDL and both RPC and message-style invocation. Process flows can be triggered by and even exposed as Web Services by using the Publish-WS capability of the product. Includes support for WS-Security.

## DATA TRANSFORMATION

Powerful data integration capability includes support for complex data formats and transformation. Data transformation engine allows any-to-any mapping between different data formats. Complex data processing functions are included such as string, math, and conditional operations as well as DB and XML file look-up. Data can be aggregated from multiple sources. Content can also be distributed to multiple destinations automatically.

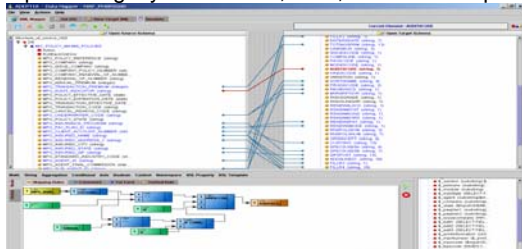
Supported data formats:

- XML-DTD, XSD, Hierarchical, attributes, enumerated values
- ASCII Text/Flat, Fixed-length, HTML, EDI, AL3, Excel files
- SQL compliant relational databases such as Oracle, Sybase, DB2, Informix, MySQL etc.

## MESSAGE TRANSPORT

Rich, secure, two-way data transport capability gives flexibility to specify different source and destination systems. Supported transport protocols:

- HTTP/S, S/FTP, SMTP/POP3/IMAP/MAPI, JMS, JCA, ODBC/JDBC, SOAP
- Adapters: Legacy data stores, SAP, JDE and Peoplesoft etc.

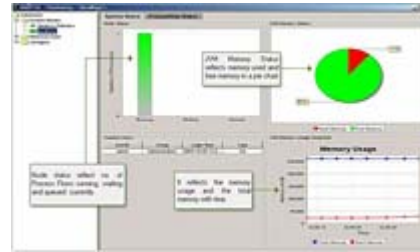


## HUMAN WORKFLOW

BPMS allows deploying of process flows that include tasks where human decisions are needed. When an action is required business users are alerted via email and on the Task Manager. Users interact via a web-interface with the process flow to complete their tasks. These actions may require manual intervention to resolve exceptions, review of business data to make decisions, and download/upload of documents. A WebDAV based document management system is included.

## DASHBOARD, REPORTING, and OPTIMIZATION

BPMS includes a dashboard and reporting engine which are wizard-driven to enable quick design of real-time metrics boards and reports.



BPMS saves all logs and process data in a database for archival. Pre-built reports are included that allow analysis of run-time process metrics to review performance of processes and identify resource or personnel bottlenecks. Fixing these constraints can significantly optimize processes, resulting in cost savings, improved operational efficiencies and can lead to strategic business advantage.

## COLLABORATION ENVIRONMENT

Collaboration environment is available where users can be assigned to different self-contained "groups" that refer to departments and individual external partners. Users may be assigned different access privileges based on their roles and responsibilities.

## REAL TIME SYSTEM MONITORING

System and process flow monitoring feature offers a consolidated view of server resources, users logged in and all the processes that are currently running. Current state of each process is displayed along with options to pause or abort the process.

## SYSTEM REQUIREMENTS

**Operating Systems:** Windows NT/2000/2003/XP, Unix  
**Database:** Embedded DB included. Commercial RDBMS recommended for production environments.

**CPU:** Intel® Pentium III 1 GHz and above or compatible

**RAM:** 512MB minimum. 2GB recommended

**Hard Disk Space:** 500MB

**Java:** J2SE v1.5 SDK

For more information, please contact us.

### Adeptia Inc.

443 North Clark Ave, Suite 350

Chicago, Illinois 60610

(312) 229-1727

[info@adeptia.com](mailto:info@adeptia.com)

[www.adeptia.com](http://www.adeptia.com)