

Customer and Partner Integration Accelerator

Centrally manage all customer and partner interfaces from one platform

OVERVIEW

Adeptia Customer and Partner Integration Accelerator is a comprehensive solution that provides an out-of-the-box capability to quickly and easily exchange information with external entities such as partners, customers, suppliers, distributors and regulatory bodies by connecting them to a company's on-premise systems and applications. This ready-to-configure solution significantly improves implementation time while reducing complexity, risk and high maintenance costs of custom-coded solutions.

BUSINESS NEEDS

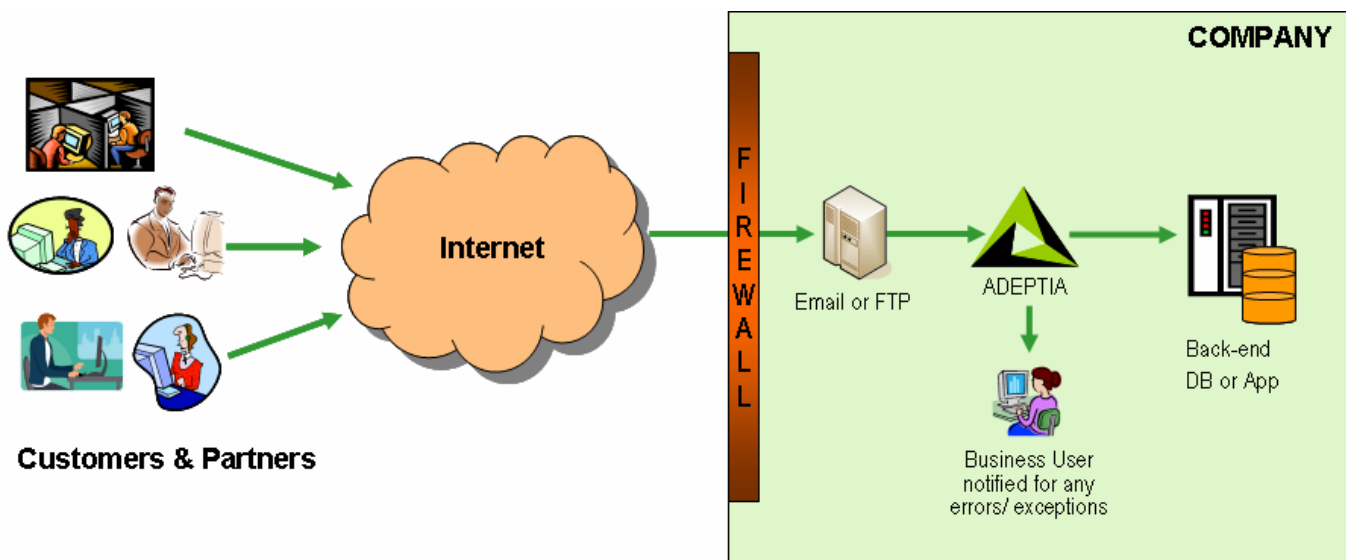
- Automatically consolidate customer data and information from multiple channels
- Automatically update Partners, Resellers and Distributors
- Automatically receive, translate and process incoming information and files from customers
- Provision and setup new customers and partners faster

BENEFITS

- Allow customers to send information in any format they want, rather than imposing your format
- Improve productivity of sales and delivery teams
- Improve consistency, quality and access to critical business information
- Improve customer experience, satisfaction and profitability
- Enhance customer and partner relationships by making it easier to do business with your organization

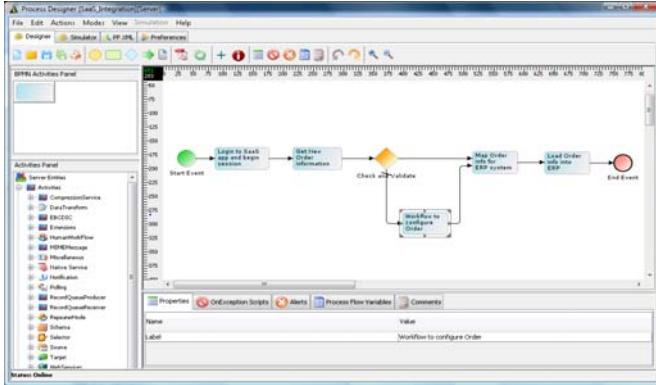
KEY FEATURES

- Setup data flows to integrate with partners and customers within hours or days
- Consolidate in one place all the Connections, Formats, Protocols, Mapping Rules, Schedulers / Triggers and Data Flows for all your customers and trading partners
- Automate business processes including human WORKFLOW tasks rather than just moving data
- Graphical, point-and-click approach to creating and deploying integration flows.
- Adeptia accelerator includes pre-built flows, templates and connectors that just need to be configured.
- Object-based architecture promotes reusable components and functionality across disparate custom, packaged and legacy applications
- No hardware or appliances need to be purchased, setup and managed.
- Flexibility to handle any data file formats



PROCESS DESIGNER

Adeptia offers a graphical process design and modeling interface. It is a simple to use, drag and drop interface for quickly designing data flows and to document business rules. Developers directly implement the flows for execution by creating and populating each service task in the process flow. Process Designer utilizes BPMN standards based notation.



PROCESS ENGINE

Adeptia includes a powerful, full-featured service orchestration engine for automated process execution. Its support for decision nodes, sub-processes, exception handling, forks and joins, allows execution of data flows of almost any complexity. It also supports failure recovery as well as transactional rollbacks for reliability and high performance.

COLLABORATION ENVIRONMENT

Collaboration environment is available based on a centralized server-based repository of all services, activities and flows that developers access automatically thru their design environment. Users may be assigned different access privileges based on their roles and responsibilities.

MESSAGE FORMATS AND SCHEMAS

Adeptia provides a simple and intuitive way to specify the data structure and metadata information for multiple file and message formats. A form-based interface prompts users to specify the record structure and all the field elements including the data types. All the schemas that are defined are saved as reusable activities for ease of use in multiple data flows.

Supported data formats:

- XML-DTD, XSD, Hierarchical, attributes, enumerated values
- ASCII Text/Flat, Fixed-length, HTML, EDI, AL3, HL7, Excel files
- SQL compliant relational databases such as SQL Server, Oracle, Sybase, DB2, MySQL etc.

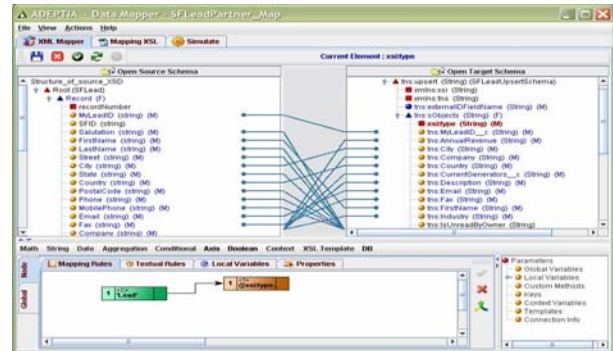
MESSAGE TRANSPORT

Rich, secure, two-way data transport capability gives flexibility to specify different source and destination systems. Supported transport protocols included:

- HTTP/S, S/FTP, SMTP/POP3, JMS, JDBC, SOAP

DATA MAPPING AND TRANSFORMATION

The Data Mapping engine in Adeptia allows any-to-any transformations between different data formats. Complex data processing functions are included such as string, math, and conditional operations as well as DB and XML file look-up. Mapping rules can be applied from multiple sources to multiple targets irrespective of their data format. So, data can be aggregated from multiple sources. Content can also be distributed to multiple destinations automatically. Simulation ability allows verification before deployment.



TRIGGERS AND POLLING EVENTS

Real-time triggers allow execution of data flows asynchronously based on external events. Scheduler or batch trigger allows execution at fixed times or intervals. Polling events enable waiting for external tasks to complete during execution of the flow. Following events are supported: File Created/Modified, FTP, Email, JMS, Database, and Scheduler.

MANAGING BULK DATA

Adeptia supports handling and processing of very large data files. The schema parser and mapping engine have scalable performance that can scale up to handle hundreds of megabytes of data files that may contain hundreds of thousands of records. This is done in an efficient manner at a speed and throughput that is only matched by dedicated hardware appliance-type of solutions.

SYSTEM REQUIREMENTS

Operating Systems: Windows NT/2000+/XP, UNIX, Linux
Database: Embedded DB included. Commercial RDBMS recommended for production environments.
Java: J2SE v1.5 SDK

ABOUT ADEPTIA

For more information, please contact us.
Adeptia Inc.
443 North Clark, Suite 350
Chicago, Illinois 60610
312-229-1727
sales@adeptia.com
www.adeptia.com

Adeptia is a trademark of Adeptia, Inc.