

ESB Suite

The #1 ESB solution for quickly integrating any application, data type and location and laying the foundation for solving additional ETL, B2Bi and BPM challenges.

Overview

Adeptia ESB Suite is a comprehensive Enterprise Service Bus that combines process automation with application and partner integration. It uses Service Oriented Architecture (SOA) and a process-based model to create flexible and loosely-coupled solutions for any business integration need.

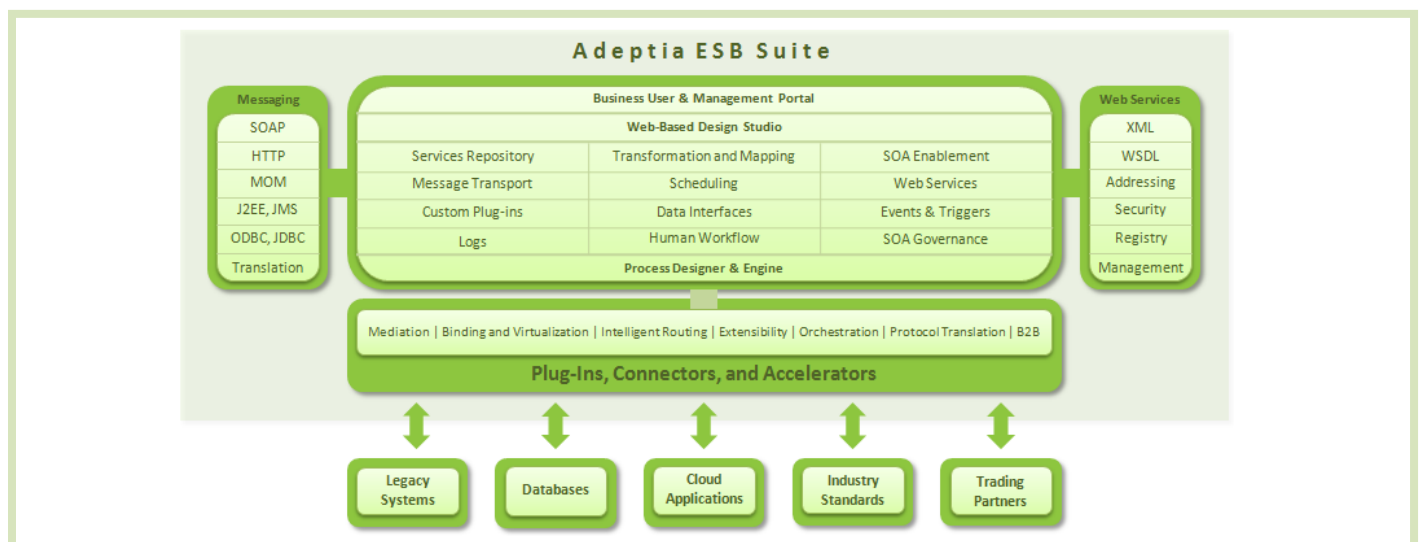
ESB Suite is a powerful middleware platform that documents, automates and executes critical data processes. It also offers IT staff an easy and simple way to deliver complex data integration for changing business needs without need for extensive coding. This enterprise-class software allows companies to leverage the Internet by deploying interfaces that allow seamless data flows between partners, suppliers and customers.

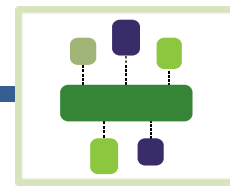
Benefits

- Centrally manage all integration interfaces within one solution
- Document and formalize data flows and mapping rules
- Enforce data validation rules by specifying them in processes
- Ensure data flows are constant and repetitive, not ad-hoc
- Trigger data flows based on real-time or scheduler events
- Specify error-handling rules and manage exceptions
- Accelerate return on investment by realizing significant cost savings on integration projects
- Leverage technology investments by extending functionality of existing systems
- Enhance customer and partner relationships by making it easier to do business with your organization

Key Features

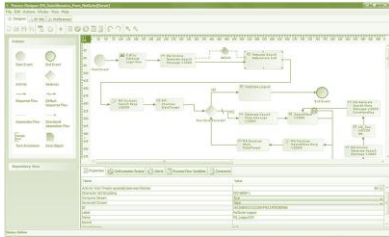
- Complete integration solution that is well-suited for integrating with SaaS or Cloud based applications
- Process centric and service oriented approach to application integration
- Includes both graphical design environment and fully featured run-time engine in one package
- Powerful capability that is suited for both Enterprise Application Integration (EAI) and Business to Business Integration (B2Bi)
- Web-based, intuitive interface allows for increased productivity with minimal training
- Comprehensive Web Services capabilities
- Object-based architecture promotes reusable components and functionality across disparate custom, packaged and legacy applications
- Allows business users to interact with running flows
- Complete management, reporting and auditing capabilities to track and monitor transactions
- Fully standards-based solution, using XML and J2EE





Process Designer

Adeptia's ESB Suite offers a graphical process design and modeling interface. It is a simple to use, drag and drop interface for quickly designing data flows and to document business rules. Developers directly implement the flows for execution by creating and populating each service task in the process flow. Process Designer utilizes BPMN standards based notation.



Process Engine

ETLS includes a powerful, full-featured service orchestration engine for automated process execution. Its support for decision nodes, sub-processes, exception handling, forks and joins, allows execution of data flows of almost any complexity. It also supports failure recovery as well as transactional rollbacks for reliability and high performance.

Web Services

Comprehensive support for Web Services includes ability to utilize any Web Service as a task in a process flow. This includes support for introspection of UDDI/WSDL and both RPC and message-style invocation. Includes support for WS-Security. Further, any data flow can be published as a Web Service.

Message Formats and Schemas

ETL Suite provides a simple and intuitive way to specify the data structure and metadata information for multiple file and message formats. A form-based interface prompts users to specify the record structure and all the field elements including the data types. All the schemas that are defined are saved as reusable activities for ease of use in multiple data flows.

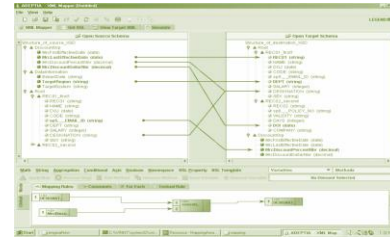
Supported data formats:

- XML-DTD, XSD, Hierarchical, attributes, enumerated values
- ASCII Text/Flat, Fixed-length, HTML, EDI, AL3, Excel files
- All Relational Databases: Oracle, MySQL, SQL Server etc.



Data Mapping and Transformation

The Data Mapping engine in ETLs allows any-to-any transformations between different data formats. Complex data processing functions are included such as string, math, and conditional operations as well as DB and XML file look-up. Mapping rules can be applied from multiple sources to multiple targets irrespective of their data format. So, data can be aggregated from multiple sources. Content can also be distributed to multiple destinations automatically. Simulation ability allows verification before deployment.



Message Transport

Rich, secure, two-way data transport capability gives flexibility to specify different source and destination systems. Supported transport protocols:

- HTTP/S, FTP, SMTP/POP3, JMS, JCA, JDBC, SOAP
- Adapters: Legacy data stores, SAP, Oracle, JDE and PeopleSoft, Salesforce, NetSuite etc.

Triggers and Polling Events

Real-time triggers allow execution of data flows asynchronously based on external events. Scheduler or batch trigger allow execution at fixed times or intervals. Polling events enable waiting for external tasks to complete during execution of the flow. Following events are supported: File Created/Modified, Database, and Scheduler.

Collaboration Environment

ESB Suite is a completely web-based solution that facilitates collaboration between business analysts, users and IT developers. This Services Oriented Architecture (SOA) based solution increases reusability and reduces implementation time. Users may be assigned different access privileges based on their roles and responsibilities.

System Requirements

- Operating Systems:** Windows, Linux, Solaris
- Database:** Embedded DB included. Commercial RDBMS recommended for production environments.
- CPU:** Intel® Pentium III 1 GHz or above or compatible
- RAM:** 1GB minimum, 8GB recommended
- Java:** J2SE v1.5 SDK

