

Leading the Integration Revolution

Your business problems have changed. Why hasn't your integration solution?

B2Bi Suite

Overview

Adeptia Business to Business Integration (B2Bi) Suite is a next generation integration software that combines process automation with application and partner integration. It leverages state-of-the-art technologies to offer a powerful platform for "centrally managing" all data flows and information exchanges within an organization in a secure, reliable manner. It uses Service Oriented Architecture (SOA) and a process-based framework to create flexible and loosely-coupled solutions for any business integration need.

B2Bi Suite is an enterprise-class software product that is designed to integrate customer and partner data with any application or database using industry standards such as EDI, EDIFACT, RosettaNet, HIPAA HL7, ACORD AL3, XML etc. This enterprise-class software allows companies to leverage the Internet by deploying interfaces that allow seamless data flows between partners, suppliers and customers.

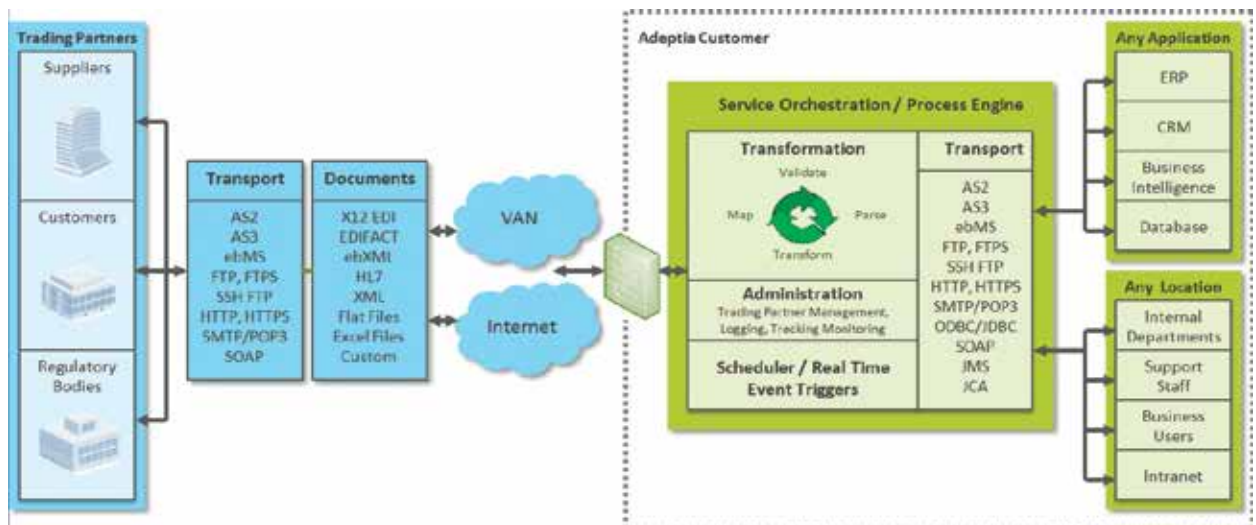
Key Features

- Powerful, next generation integration solution that combines B2B integration (B2Bi) with Enterprise Application Integration (EAI) and Extract, Transform, Load (ETL) in a single, packaged application
- Process centric and services (SOA) oriented approach to B2B integration
- Easy to configure Trading Partner Management
- Visual data mapping for EDI, HL7, RosettaNet etc.
- Managed File Transfer (MFT) and secure communications including AS2, AS3, MLLP etc.
- Web-based, intuitive interface allows for increased productivity with minimal training
- Comprehensive Web Services capabilities
- Object-based architecture promotes reusable components and functionality

- Allows business users to interact with running flows
- Complete management, reporting and auditing capabilities to track and monitor transactions
- Fully standards-based solution, using XML and J2EE

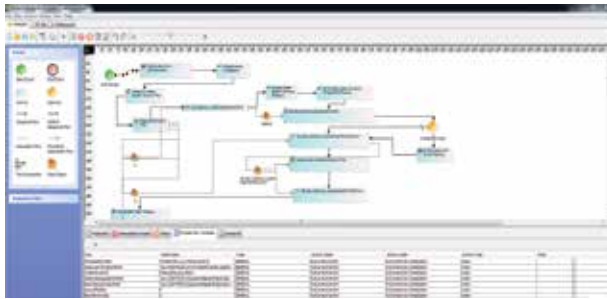
Benefits

- Centrally manage all integration interfaces within one solution
- Document and formalize data flows and mapping rules
- Enforce data validation rules by specifying them in processes
- Ensure data flows are constant and repetitive, not ad-hoc
- Trigger data flows based on real-time or scheduler events
- Specify error-handling rules and manage exceptions
- Accelerate return on investment by realizing significant cost savings on integration projects



Process Designer

Adeptia's B2Bi Suite offers a graphical process design and modeling interface. It is a simple to use, drag and drop interface for quickly designing data flows and to document business rules. Developers directly implement the flows for execution by creating and populating each service task in the process flow. Process Designer utilizes BPMN standards based notation.



Process Engine

B2Bi Suite includes a powerful, full-featured service orchestration engine for automated process execution. Its support for decision nodes, sub-processes, exception handling, forks and joins, allows execution of data flows of almost any complexity. It also supports failure recovery as well as transactional rollbacks for reliability and high performance.

Web Services

Comprehensive support for Web Services includes ability to utilize any Web Service as a task in a process flow. This includes support for introspection of UDDI/WSDL and both RPC and message-style invocation. Includes support for WS-Security. Further, any data flow can be published as a Web Service.

Message Formats and Schemas

B2Bi Suite provides a simple and intuitive way to specify the data structure and metadata information for multiple file and message formats. A formbased interface prompts users to specify the record structure and all the field elements including the data types. All the schemas that are defined are saved as reusable activities for ease of use in multiple data flows.

Supported data formats:

XML-DTD, XSD, Hierarchical, attributes, enumerated values,
ASCII Text/Flat, Fixed-length, HTML, EDI, AL3, Excel files,
All Relational Databases: Oracle, MySQL, SQL Server, etc.



Data Mapping and Transformation

The Data Mapping engine allows any-to-any transformations between different data formats. Complex data processing functions are included such as string, math, and conditional operations as well as DB and XML file look-up. Mapping rules can be applied from multiple sources to multiple targets irrespective of their data format. So, data can be aggregated from multiple sources. Content can also be distributed to multiple destinations automatically. Simulation ability allows verification before deployment.

Message Transport

Rich, secure, two-way data transport capability gives flexibility to specify different source and destination systems.

Supported transport protocols:

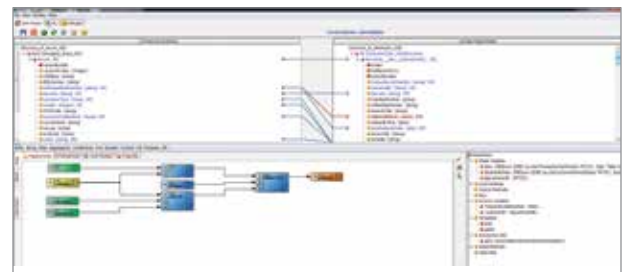
HTTP/S, FTP, SMTP/POP3, JMS, JCA, JDBC, SOAP,
Adapters: Legacy data stores, SAP, Oracle, JDE,
PeopleSoft, Salesforce, NetSuite, etc.

Managed File Transfer

B2Bi Suite includes an optional, industry leading secure communications module that provides full data security with encryption, guaranteed delivery, VAN connectivity and high volume file transferring capabilities including Drummond-certified support for standard protocols such as AS2, AS3, ebMS etc.

Triggers and Polling Events

Real-time triggers allow execution of data flows asynchronously based on external events. Scheduler or batch trigger allow execution at fixed times or intervals. Polling events enable waiting for external tasks to complete during execution of the flow. Following events are supported: File Created/Modified, Database, and Scheduler.



System Requirements

Operating Systems: Windows, Linux, Solaris

Database: Embedded DB included. Commercial RDBMS recommended for production environments.

CPU: Quad-core for production, dual-core for development

RAM: 4GB minimum, 8GB recommended

Java: J2SE v1.6 SDK